

Manille droite HR à axe vissé / Dee shackle with screw pin

Description Manille droite de levage en acier haute résistance à axe vissé

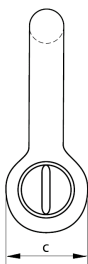
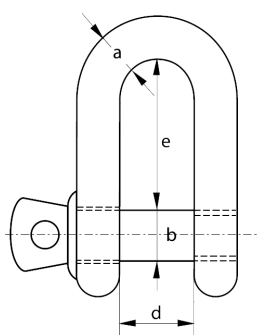
Description Lifting shackle in high tensile steel

Matière Acier haute résistance, grade 60
Finition galvanisée

Material Grade 6 high tensile steel
Galvanised coating

Normes Coefficient de sécurité : 1:6
Conforme à la norme US Fed. Spec. RR-C-271
Marquage : CE-CMU-TAILLE-LOT

Standard Safety factor : 1:6
Complies with US Fed. Spec. RR-C-271
Marking : CE-SWL-SIZE-BATCH



| RÉF. / CODE | CMU WLL (t) | Dimensions Dimensions (mm) | | | | | Poids Weight 100 pcs (kg) |
|----------------|-------------------|----------------------------------|----|-----|-----|-----|---------------------------------|
| | | a | b | c | d | e | |
| 306 096 | 0.33 | 5 | 6 | 16 | 10 | 19 | 3 |
| 306 097 | 0.5 | 6 | 8 | 17 | 12 | 22 | 5 |
| 306 098 | 0.75 | 8 | 10 | 21 | 13 | 26 | 8 |
| 305 807 | 1 | 10 | 12 | 26 | 16 | 32 | 13 |
| 306 099 | 1.5 | 11 | 28 | 28 | 18 | 37 | 17 |
| 304 001 | 2 | 13 | 16 | 30 | 21 | 43 | 30 |
| 305 035 | 3.25 | 16 | 19 | 42 | 27 | 51 | 57 |
| 305 453 | 4.75 | 19 | 22 | 48 | 32 | 59 | 98 |
| 305 808 | 6.5 | 22 | 25 | 57 | 36 | 73 | 146 |
| 305 571 | 8.5 | 25 | 28 | 62 | 43 | 85 | 196 |
| 306 100 | 9.5 | 28 | 32 | 69 | 46 | 90 | 275 |
| 305 572 | 12 | 32 | 35 | 78 | 52 | 94 | 411 |
| 306 101 | 13.5 | 35 | 38 | 84 | 57 | 115 | 520 |
| 306 102 | 17 | 38 | 42 | 94 | 60 | 127 | 681 |
| 306 103 | 25 | 45 | 50 | 112 | 73 | 146 | 1130 |
| 308 516 | 35 | 51 | 55 | 127 | 83 | 171 | 1650 |
| 308 517 | 55 | 62 | 70 | 152 | 105 | 203 | 3420 |