

## Chape à souder / Welding cap RGB

**Description** Les instructions de soudage appropriées sont disponibles sur demande

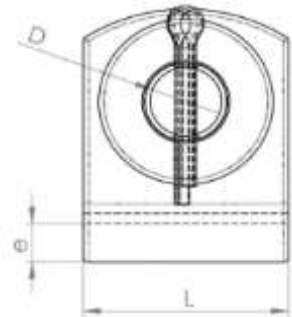
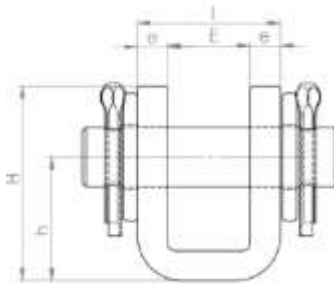
*Description*

*Appropriate welding instructions are available upon request*

**Matière** Acier de construction, aciers alliés ou inox.

*Material*

*Alloy steel quenched and tempered*



| Code    | Dimensions<br>Dimensions<br>(mm) |    |    |    |    |    |    | Poids<br>Weight<br>(kg) |
|---------|----------------------------------|----|----|----|----|----|----|-------------------------|
|         | ∅                                | E  | e  | H  | h  | L  | l  |                         |
| 308 299 | 6                                | 9  | 3  | 21 | 12 | 15 | 15 | 0.03                    |
| 308 300 | 8                                | 11 | 4  | 26 | 16 | 20 | 19 | 0.05                    |
| 308 301 | 10                               | 14 | 5  | 32 | 20 | 25 | 24 | 0.10                    |
| 308 302 | 12                               | 16 | 6  | 39 | 24 | 30 | 28 | 0.15                    |
| 308 303 | 14                               | 19 | 7  | 45 | 28 | 35 | 33 | 0.24                    |
| 308 304 | 16                               | 21 | 8  | 52 | 32 | 40 | 37 | 0.38                    |
| 308 305 | 18                               | 25 | 10 | 58 | 36 | 50 | 44 | 0.60                    |
| 308 306 | 20                               | 27 | 10 | 65 | 40 | 55 | 47 | 0.79                    |
| 308 307 | 22                               | 29 | 12 | 71 | 44 | 60 | 51 | 1.12                    |
| 308 308 | 24                               | 31 | 12 | 78 | 48 | 60 | 55 | 1.33                    |
| 307 919 | 26                               | 34 | 12 | 84 | 52 | 60 | 60 | 1.45                    |