

Anneau de levage mâle DIN 580 / Lifting eye bolt DIN 580

Description Anneau de levage mâle Inox
Marquage \emptyset , CE, CMU, fabricant, matière, numéro de lot

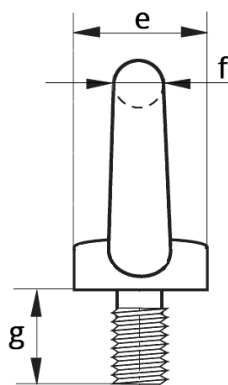
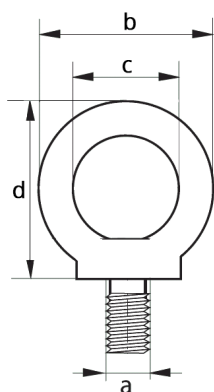
Description *Lifting eye bolt in stainless steel*
Marking \emptyset , CE, WLL, manufacturer, material, batch number

Matière Acier Inoxydable AISI 316 estampé

Material *Stamped stainless steel AISI 316*

Normes Dimensions conformes à DIN 580
Coefficient de sécurité : 1:5
Filetage ISO

Standards *Dimensions according to DIN 580*
Safety factor : 1:5
ISO tapping



Réf. / Code	CMU WLL (kg)	Dimensions Dimensions (mm)						
		\emptyset a	b	c	d	e	f	g
105 419	180	6	36	20	36	20	8	13
105 420	300	8	36	20	36	20	8	13
105 421	500	10	45	25	45	25	10	17
300 610	800	12	54	30	53	30	12	20.5
305 477	1100	14	54	30	53	30	12	20.5
301 066	1500	16	63	35	62	35	14	27
303 206	2400	20	72	40	71	40	16	30
310 488	3600	24	90	50	90	50	20	36